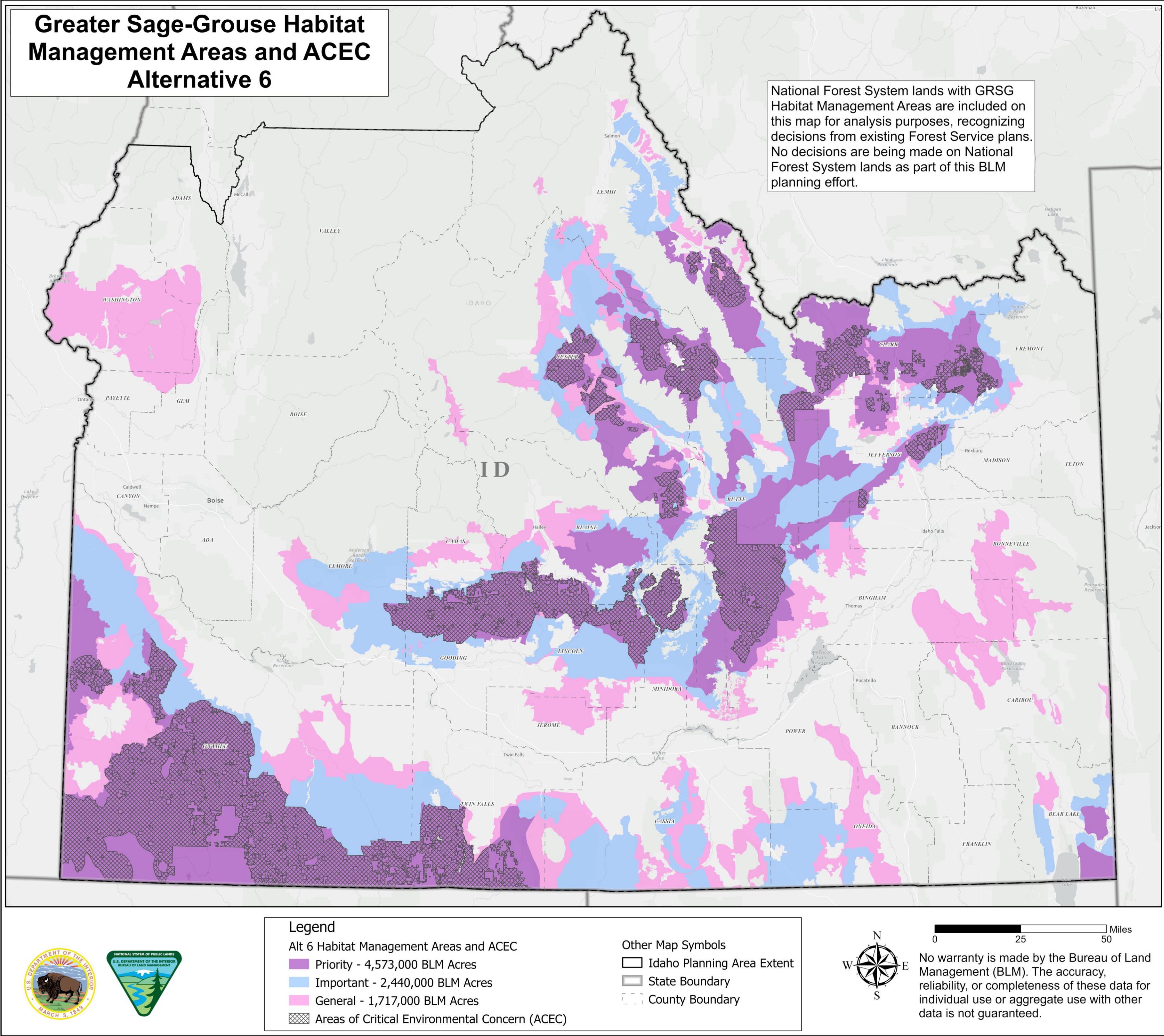


Idaho BLM: Area of Critical Environmental Concern (ACEC)



Proposed ACECs under Alternatives 3 and 6: 3,438,000 acres in Idaho

Management changes in ACEC under Alternative 6:

- Major ROWs: Exclusion / Minor ROWs: Avoidance
- Wind/solar: Exclusion
- Non-energy minerals: Closed to new leases and expansion associated with existing operations
- Salable Minerals: Closed to new operations for all sale types except for free-use pits in order to support maintenance needs for existing local roads to ensure public safety. Any free-use pits should avoid ACEC.
- Disturbance Cap: No exceptions available in PHMA
- All other management as described for PHMA

Management changes in ACEC under Alternative 3:

- Same as PHMA